



EN

Manual to Install MMDriver

DE

- **INSTALLATION MANUAL**
Please read before installing this equipment.
- **INSTALLATIONSANLEITUNG**
Machen Sie sich bitte vor Einbau des Geräts mit dem Inhalt dieser Anleitung vertraut.
- **MANUEL D'INSTALLATION**
A lire avant d'installer cet équipement.
- **MANUAL DE INSTALACIÓN**
Lea lo siguiente antes de instalar este equipo.
- **MANUALE DI INSTALLAZIONE**
Leggere le informazioni del presente manuale prima di installare questo apparecchio.
- **INSTALLATIONSHANDBOK**
Var vänlig läs detta innan utrustningen installeras.

FR

ES

IT

ALPINE ELECTRONICS MARKETING, INC.
1-1-8 Nishi Gotanda,
Shinagawa-ku,
Tokyo 141-0031, Japan
Phone 03-5496-8231

ALPINE ELECTRONICS OF AMERICA, INC.
19145 Gramercy Place, Torrance,
California 90501, U.S.A.
Phone 1-800-ALPINE-1 (1-800-257-4631)

ALPINE ELECTRONICS OF CANADA, INC.
7300 Warden Ave., Suite 203, Markham,
Ontario L3R 9Z6, Canada
Phone 1-800-ALPINE-1 (1-800-257-4631)

ALPINE ELECTRONICS OF AUSTRALIA PTY. LTD.
6-8 Fiveways Boulevard Keysborough,
Victoria 3173, Australia
Phone 03-9769-0000

ALPINE ELECTRONICS GmbH
Kreuzerkamp 7,
40878 Ratingen, Germany
Phone 02102-4550

ALPINE ELECTRONICS OF U.K. LTD.
Alpine House
Fletchamstead Highway, Coventry CV4 9TW, U.K.
Phone 0870-33 33 763

ALPINE ELECTRONICS FRANCE S.A.R.L.
(RCS PONTOISE B 338 101 280)
98, Rue de la Belle Etoile, Z.I. Paris Nord II,
B.P. 50016, 95945 Roissy Charles de Gaulle
Cedex, France
Phone 01-48638989

ALPINE ITALIA S.p.A.
Viale C. Colombo 8, 20090 Trezzano
Sul Naviglio (MI), Italy
Phone 02-484781

ALPINE ELECTRONICS DE ESPAÑA, S.A.
Portal de Gamarra 36, Pabellón, 32
01013 Vitoria (Alava)-APDO 133, Spain
Phone 945-283588

SE

Caution

Do not install the MMDriver software while the HDD is connected to your PC. Software conflicts may occur.

MMDriver System Requirements

OS

Microsoft Windows98 SE or later

CPU

Pentium-class CPU or higher

RAM

64MB or more (128MB recommended)

Available hard disk capacity

Minimum 20MB
(Additional storage required for music files as well.)

CD-ROM drive equipment

CD-ROM or CD-R/CD-RW drive

Sound card

USB port

USB version 1.1 compatible

Display

Color monitor or display panel (with a minimum area/resolution of 800 x 600)

Internet connection

In order to take advantage of Gracenote CDDB Music Recognition Service (for CD track/title information), an Internet connection is required.

NOTE

The operation of the MMDriver cannot be guaranteed, even on PCs meeting the above system requirements.

Installation

1 Insert the MMDriver CD-ROM into the PC's drive and start MMDriver.exe.

Follow the onscreen instructions to install the MMDriver.

- When using Windows 2000/Windows XP, log on with the administrator's account.
- Before installation, quit all open applications.

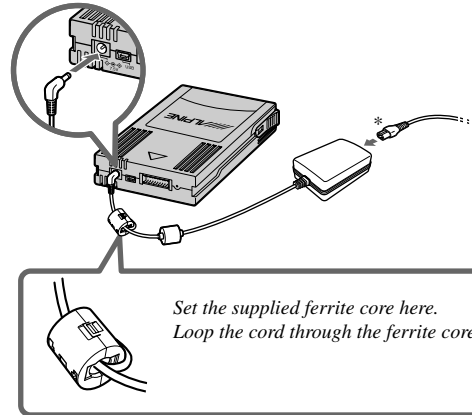
2 After installation, restart the PC.

Connection

1 Start MMDriver installed to the PC.



2 Connect the AC adaptor to the HDD.

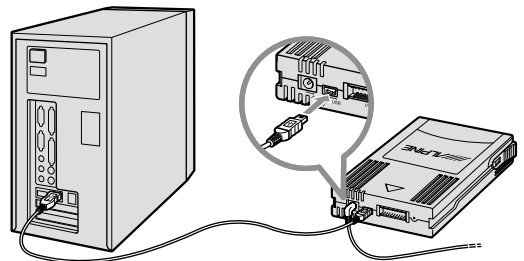


* Use one of the supplied cables according to your outlet.

NOTES

- Refer to the instruction manual of the HDA-5460 for HDD removal.
- Please read the supplied instruction manual thoroughly before making any connections. We do not accept responsibility for failures that result from not following the instructions in the manual.
- Do not touch the HDD terminals. Do not let the terminals come in contact with metal (such as a coin) as it may cause a malfunction.
- Do not use any AC adaptor and USB cable except the ones supplied with the HDA-5460.
- Use the AC adaptor and USB cable at between 0°C to 40°C. Failure to do may cause a malfunction.

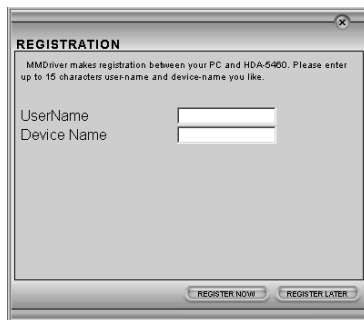
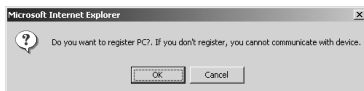
3 Connect the HDD to the PC with the USB cable.



Continued

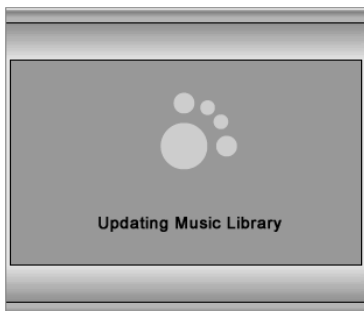
4 After connecting, register the PC in accordance with the instructions on the PC display.

- Registration is required only when the HDD is connected for the first time. For the second time or later, proceed to the step 5.




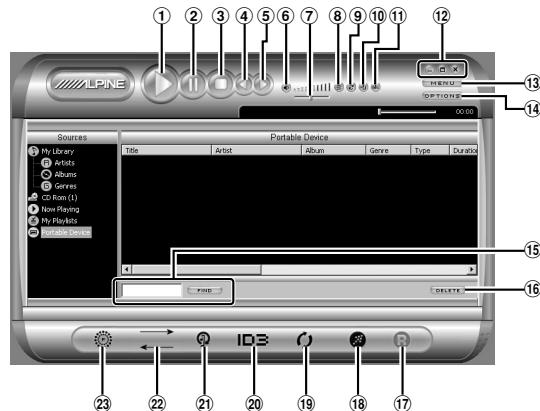
Input your desired user name and device name.

5 Updating screen of music library is displayed.



6 Confirm that the icon is displayed at the left bottom of the screen.

- Unless the HDD is connected correctly, the  icon will not be displayed. Remove it, following the instructions in "How to disconnect," and then reconnect it following the above procedures.



- ① **Play Button**
Plays the selected file(s).
- ② **Pause Button**
Pauses the playback process.
- ③ **Stop Button**
Stops the playback process.
- ④ **Previous Song Button**
Plays the previous file in the Now Playing list.
- ⑤ **Next Song Button**
Plays the next file.
- ⑥ **Speaker Mute Button**
Toggles sound on and off.
- ⑦ **Volume Button**
Controls sound volume.
- ⑧ **Shuffle Button**
Plays the songs in random order.
- ⑨ **Repeat Button**
Repeats the current file, all songs.
- ⑩ **Mode Button**
Switches between Mini Mode Window and Full Mode Window
- ⑪ **EQ/FX Button**
Opens the Graphic Equalizer and Effects Mixer window
- ⑫ **Window Controls Button**
Let you minimize, maximize, or close the window.
- ⑬ **Menu Button**
Opens a menu for using the various functions.
- ⑭ **Options Button**
Displays the Options dialog box that lets you customize how MMDriver operates.
- ⑮ **Find Box**
Lets you search for songs.
- ⑯ **Delete Button**
Removes selected songs from the window and gives you the option of also deleting them from the device on which they are stored.

17 Record Button

Encodes or records Audio CD/WAV files in MP3/WMA format.

18 Transfer Button

Opens a window that allows you to transfer selected songs between a portable music device and PC.

19 Update Media Library Button

Causes MMDriver to search your computer and connected audio storage devices (CDs, portable players, etc.) to find all songs that it can read.

20 Edit ID3 Tags Button

Opens a dialogue box you can use to view and edit details about the selected file.

21 Add Music Button

Allows you to select specific songs to add to MMDriver from any device assigned a drive letter on your computer, or a portable device.

22 Synchronize Button

Synchronizes the contents of a specified folder in your PC with the contents of your portable device.

23 Playlists Button

A "playlist" is a list of songs you want to listen to as a group. Simply select songs, regardless of where the music files are located, and save them as a playlist. You can change the order of songs, delete and add songs, and reuse the list later.

For detailed operation, refer to the help on the MMDriver.

NOTE

- Strictly observe the Warnings and Cautions written by the manufacturers of your PC and peripheral equipment.
- We do not accept responsibility for data lost due to the incorrect operation of the MMDriver. We recommend you to back-up your important data regularly.
- When you connect a HDD verified by another PC, pay attention to the following:
When you connect a HDD already verified by another PC, a message "Do you want to re-register?" is displayed. If you select "OK," all the data in the HDD will be deleted. If you select "Cancel," the data will not be deleted, but the HDD will not be able to be connected.
- MMDriver cannot record from a Mixed Mode CD or CD Extra which include both CDDA (music data) and regular data.
- Due to continuous product improvement, specifications and design are subject to change without notice.

How to disconnect

1 Confirm that the LED of the HDD is off.

When the LED is lit or flashing, do not remove the cable as data will be damaged.



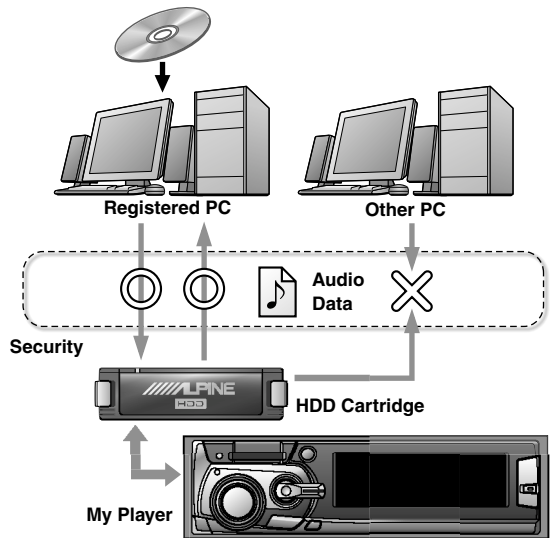
2 Remove the USB cable connected to the PC and the HDD.

3 Remove the AC adaptor.

Copyright

Except for personal enjoyment, duplicating, distributing, transferring, or copying audio data, whether for free or for a fee, without the permission of the copyright holder is strictly prohibited by the Copyright Act and by international treaty.

To protect the copyright, MMDriver imposes restrictions as shown below.



Software License for certain ALPINE Products

IMPORTANT — READ CAREFULLY BEFORE USING THIS SOFTWARE:

This License Agreement for certain ALPINE ELECTRONICS Products ("License Agreement") is a legal agreement between you (either an individual or an entity) and ALPINE ELECTRONICS, Inc. and its suppliers and licensors (collectively "ALPINE") for the ALPINE software ("Software"). The Software may include any of the following ALPINE ELECTRONICS products that are known as the ALPINE HDA-5460 Application. You may install only ONE copy of the Software.

1. GRANT OF LICENSE.

ALPINE hereby grants to you a non-exclusive license to use the Software and any related documentation ("Documentation") subject to the following terms:

- a) You may: (i) use the Software on any single computer; (ii) use the Software on a second computer so long as the first and second computers are not used simultaneously; and (iii) copy the Software for back-up and archival purposes, provided any copy must contain all of the original Software's proprietary notices.
- b) ALPINE may modify this License Agreement with respect to free versions of the Software upon 14 days written notice to you.

2. LICENSE RESTRICTIONS.

- a) You may not: (i) permit other individuals to use the Software except under the terms listed above; (ii) modify, translate, reverse engineer, decompile, disassemble (except to the extent that this restriction is expressly prohibited by law) or create derivative works based upon the Software or Documentation; (iii) copy the Software or Documentation (except for back-up or archival purposes); (iv) rent, lease, transfer, or otherwise transfer rights to the Software or Documentation; (v) remove any proprietary notices or labels on the Software or Documentation; or (vi) use the MP3 encoder in real time broadcasting (terrestrial, satellite, cable or other media) or broadcasting via the internet or other networks, such as, but not limited to, intranets. You also may not use the ALPINE PC Application MP3 encoder in pay-audio or audio-on-demand applications. Any such forbidden use shall immediately terminate your license to the Software. The recording, playback and download features of the Software are intended only for use with public-domain or properly licensed content and content creation tools. You may require a patent, copyright, or other license from a third party to create, copy, download, record or save content files for playback by this Software or to serve or distribute such files to be played back by the Software.
- b) You agree that you shall only use the Software and Documentation in a manner that complies with all applicable laws in the jurisdictions in which you use the Software and Documentation, including, but not limited to, applicable restrictions concerning copyright and other intellectual property rights.
- c) You may only use the Software for your private, non-commercial use. You may not use the Software in any way to provide, or as part of, any commercial service or application. Copies of content files, including, but not limited to songs and other audio recordings, which are downloaded or copied using the Software, and which are protected by the copyright laws or related laws of any jurisdiction, are for your own personal use only and may not be distributed to third parties or performed outside your normal circle of family and social acquaintances.
- d) You may not use the Software in an attempt to, or in conjunction with, any device, program or service designed to circumvent technological measures employed to control access to, or the rights in, a content file or other work protected by the copyright laws of any jurisdiction.

3. ENHANCEMENTS.

This license does not grant you any right to any enhancement or update.

4. BETA RELEASE VERSIONS.

In the event that the Software is a beta release version, the terms of this Section shall apply. Your license to use the Software expires 120 days after installation (or such other period as indicated by the Software) and the Software may cease to function. The Software you are receiving may contain more or less features than the commercial release of the ALPINE Product that ALPINE intends to distribute. While ALPINE intends to distribute a commercial release of the Software, ALPINE reserves the right at any time not to release a commercial release of the Software or, if released, to alter features, specifications, capabilities, functions, licensing terms, release dates, general availability or other characteristics of the commercial release. You agree that the Beta Release Versions are not suitable for production use and may contain errors affecting their proper operation. You agree that you will not do anything to circumvent or defeat the features designed to stop the Software from operating after the license expires.

5. DIGITAL RIGHTS MANAGEMENT SYSTEMS ("DRMs").

The Software may include third party DRMs as which are subject to their own license agreements. DRMs are designed to manage and enforce intellectual property rights in digital content purchased over the Internet. You may not take any action to circumvent or defeat the security or content usage rules provided or enforced by either the DRM or the Software. DRMs may be able to revoke your ability to use applicable content. ALPINE is not responsible for the operation of the DRM in any way, including revocation of your content. ALPINE is not responsible for any communications to or from any third party DRM provider, or for the collection or use of information by third party DRMs. You consent to the communications enabled and/or performed by the DRM, including automatic updating of the DRM without further notice, despite the provisions of section 5(b). You agree to indemnify and hold harmless ALPINE for any claim relating to your use of a third party DRM.

6. TITLE.

Title, ownership, rights, and intellectual property rights in and to the Software and Documentation shall remain in ALPINE and/or its suppliers. The Software is protected by the copyright laws of the United States and international copyright treaties. Title, ownership rights and intellectual property rights in and to the content accessed through the Software including the content contained in the Software media demonstration files shall be retained by the applicable content owner and may be protected by applicable copyright or other law. This license gives you no rights to such content.

7. WARRANTIES AND LIABILITIES.

DISCLAIMER OF WARRANTY & LIMIT OF LIABILITY. THE SOFTWARE AND DOCUMENTATION ARE PROVIDED AS IS WITHOUT WARRANTY OF ANY KIND. TO THE MAXIMUM EXTENT PERMITTED BY APPLICABLE LAW, ALPINE FURTHER DISCLAIMS ALL WARRANTIES, INCLUDING WITHOUT LIMITATION ANY IMPLIED WARRANTIES OF MERCHANTABILITY, FITNESS FOR A PARTICULAR PURPOSE, AND NONINFRINGEMENT. THE ENTIRE RISK ARISING OUT OF THE USE OR PERFORMANCE OF THE SOFTWARE AND DOCUMENTATION REMAINS WITH YOU. TO THE MAXIMUM EXTENT PERMITTED BY APPLICABLE LAW, IN NO EVENT SHALL ALPINE OR ITS SUPPLIERS BE LIABLE FOR ANY CONSEQUENTIAL, INCIDENTAL, INDIRECT, SPECIAL, PUNITIVE, OR OTHER DAMAGES WHATSOEVER (INCLUDING, WITHOUT LIMITATION, DAMAGES FOR LOSS OF BUSINESS PROFITS, BUSINESS INTERRUPTION, LOSS OF BUSINESS INFORMATION, OR OTHER PECUNIARY LOSS) ARISING OUT OF THIS AGREEMENT OR THE USE OF OR INABILITY TO USE THE PRODUCT, EVEN IF ALPINE HAS BEEN ADVISED OF THE POSSIBILITY OF SUCH DAMAGES. ALPINE'S TOTAL LIABILITY FOR ANY DIRECT DAMAGES SHALL NOT EXCEED FIVE DOLLARS (\$5.00). BECAUSE SOME STATES/JURISDICTIONS DO NOT ALLOW THE EXCLUSION OR LIMITATION OF LIABILITY FOR CONSEQUENTIAL OR INCIDENTAL DAMAGES, THE ABOVE LIMITATION MAY NOT APPLY TO YOU.

8. INDEMNIFICATION.

This Software is intended for use only with properly licensed media, content, and content creation tools. It is your responsibility to ascertain whether any copyright, patent or other licenses are necessary and to obtain any such licenses to serve and/or create, compress or download such media and content. You agree to record, play back and download only those materials for which you have the necessary patent, copyright and other permissions, licenses, and/or clearances. You agree to hold harmless, indemnify and defend ALPINE, its officers, directors and employees, from and against any losses, damages, fines and expenses (including attorneys' fees and costs) arising out of or relating to any claims that you have (i) viewed, downloaded, encoded, compressed, copied or transmitted any materials (other than materials provided by ALPINE) in connection with the Software in violation of another party's rights or in violation of any law, or (ii) violated any terms of this License Agreement. If you are importing the Software from the United States, you shall indemnify and hold ALPINE harmless from and against any import and export duties or other claims arising from such importation.

9. TERMINATION.

This License Agreement will automatically terminate if you fail to comply with any term hereof. No notice shall be required from ALPINE to effect such termination. You may also terminate this License Agreement at any time by notifying ALPINE in writing of termination. Upon any termination of this License Agreement, you shall immediately discontinue use of the Software and shall within three (3) days return to ALPINE, or certify destruction of, all full or partial copies of the Software, documentation and related materials provided by ALPINE. Your obligation to pay accrued charges and fees shall survive any termination of this License Agreement.

10. NO ASSIGNMENT.

This Agreement is personal to you, and may not be assigned without ALPINE's express written consent. In the event that you are an entity that merges with another entity or are acquired by another entity during the Term, you shall provide written notice of such merger or acquisition not later than the date on which any public announcement is made. If ALPINE does not consent to assignment of this Agreement to the new or acquiring entity in such merger or acquisition, ALPINE may terminate this Agreement on thirty (30) days' written notice. Both parties shall perform under this Agreement until such termination is effective.

11. U.S. GOVERNMENT RESTRICTED RIGHTS AND EXPORT RESTRICTIONS. U.S. GOVERNMENT RESTRICTED RIGHTS:

This Software and documentation are provided with RESTRICTED RIGHTS. Use, duplication or disclosure by the Government is subject to restrictions set forth in subparagraphs (a) through (d) of the Commercial Computer Software—Restricted Rights at FAR 52.227-19 when applicable, or in subparagraph (c)(1)(ii) of the Rights in Technical Data and Computer Software clause at DFARS 252.227-7013, and in similar clauses in the NASA FAR supplement, as applicable. Manufacturer is ALPINE ELECTRONICS, Inc./1-1-B Nishi-Gotanda Shinagawa-ku Tokyo 141-8501. You are responsible for complying with all trade regulations and laws both foreign and domestic. You acknowledge that none of the Software or underlying information or technology may be downloaded or otherwise exported or re-exported (i) into (or to a national or resident of) Cuba, Iraq, Libya, Sudan, North Korea, Iran, Syria or any other country subject to a U.S. embargo; or (ii) to anyone on the U.S. Treasury Department's list of specially Designated Nationals or the U.S. Commerce Department's Denied Parties List or Entity List. By using the Software you are agreeing to the foregoing and are representing and warranting that (i) no U.S. federal agency has suspended, revoked, or denied you export privileges, (ii) you are not located in or under the control of a national or resident of any such country or on any such list, and (iii) you will not export or re-export the Software to any prohibited country, or to any prohibited person, entity, or end-user as specified by U.S. export controls.

12. MISCELLANEOUS.

This License Agreement shall constitute the complete and exclusive agreement between us, notwithstanding any variance with any purchase order or other written instrument submitted by you, whether formally rejected by ALPINE or not. The terms and conditions contained in this License Agreement may not be modified except in a writing duly signed by you and an authorized representative of ALPINE. If any provision of this License Agreement is held to be unenforceable for any reason, such provision shall be reformed only to the extent necessary to make it enforceable, and such decision shall not affect the enforceability of such provision under other circumstances, or of the remaining provisions hereof under all circumstances. This License Agreement shall be governed by the laws of the State of California, without regard to conflicts of law provisions, and you hereby consent to the exclusive jurisdiction of the state and federal courts sitting in the State of California. Any and all unresolved disputes relating in any way to, or arising out of, the Software, your use of the Software or this License Agreement shall be submitted to arbitration in the State of California; except that, to the extent that you have breached or have indicated your intention to breach this License Agreement in any manner which violates or may violate ALPINE's intellectual property rights, or may cause continuing or irreparable harm to ALPINE (including, but not limited to, any breach that may impact ALPINE's intellectual property rights, or a breach by reverse engineering), ALPINE may seek injunctive relief, or any other appropriate relief, in any court of competent jurisdiction. Any arbitration of a dispute under this Agreement shall be conducted under the rules then prevailing of the American Arbitration Association. The arbitrator's award shall be binding and may be entered as a judgment in any court of competent jurisdiction. This License Agreement will not be governed by the United Nations Convention of Contracts for the International Sale of Goods, the application of which is hereby expressly excluded.

- *Music recognition technology and related data are provided by Gracenote and the Gracenote CDDB® Music Recognition ServiceSM. Gracenote is the industry standard in music recognition technology and related content delivery. For more information visit www.gracenote.com.*



- *CD and music-related data from Gracenote CDDB® Music Recognition ServiceSM © 2000, 2001, 2002 Gracenote. Gracenote CDDB Client Software © 2000, 2001, 2002 Gracenote. U.S. Patents Numbers #5,987,525; #6,061,680; #6,154,773, and other patents issued or pending. CDDB is a registered trademark of Gracenote. The Gracenote logo and logotype, the Gracenote CDDB logo and logotype, and the "Powered by Gracenote CDDB" logo are trademarks of Gracenote. Music Recognition Service and MRS are service marks of Gracenote.*
- *Microsoft Windows is registered trademark of Microsoft Corporation in the United States.*
- *The names of products or companies, etc., appearing in this manual are general trademarks or registered trademarks.*

