

# Bluetooth® Software Update Manual CDE-177BT / CDE-178BT / iDE-178BT



**ALPINE ELECTRONICS GmbH**  
Wilhelm-Wagenfeld-Straße 1-3,  
80807 München, Germany  
Phone 089-32 42 640

**ALPINE ELECTRONICS OF U.K., LTD.**  
Alpine House  
Fletchamstead Highway, Coventry CV4 9TW, U.K.  
Phone 0870-33 33 763

**ALPINE ELECTRONICS FRANCE S.A.R.L.**  
(RCS PONTOISE B 338 101 280)  
98, Rue de la Belle Etoile, Z.I. Paris Nord II,  
B.P. 50016, 95945 Roissy Charles De Gaulle  
Cedex, France  
Phone 01-48638989

**ALPINE ITALIA S.p.A.**  
Viale C. Colombo 8, 20090 Trezzano  
Sul Naviglio (MI), Italy  
Phone 02-484781

**ALPINE ELECTRONICS DE ESPAÑA, S.A.**  
Portal de Gamarra 36, Pabellón, Pabellón, 32  
01013 Vitoria (Alava)-APDO 133, Spain  
Phone 945-283588

## Introduction

This manual describes the steps required for updating the Head Unit's Bluetooth firmware. Read all warnings and steps carefully before performing the update.

## Improvements

The update improves the following points:

- Bluetooth audio performance during phonebook download
- Phonebook download speed

## Requirements

- Computer with USB port
- USB memory stick

## Caution



- **Do NOT update the Bluetooth firmware while driving.**
- **Do NOT turn off the vehicle or remove power from the Head Unit while the unit is updating. The update will not be performed correctly and the Head Unit may be damaged.**

## Notice

- Updating will result in all user information being deleted, including user settings, paired devices and phonebook contacts.
- Please contact Alpine Technical Support of your country in case you have any questions concerning this update process.

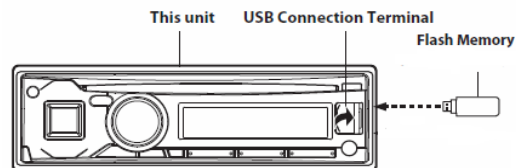
## Bluetooth Firmware Update Instructions

USB front:

- CDE-177BT

USB rear:

- CDE-178BT
- iDE-178BT

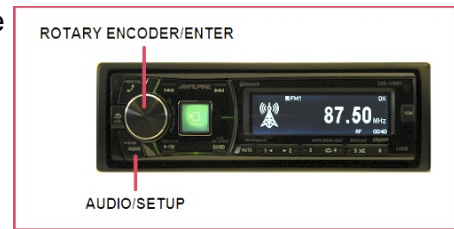


## Downloading the Bluetooth Firmware Update

Visit the Alpine homepage of your region to download the Bluetooth firmware update file to the computer that will be used to perform this update. The update file can be found at your local Alpine website at [www.alpine-europe.com](http://www.alpine-europe.com)

## Head Unit Setup Buttons Illustration

The illustration shows the buttons that will be used during the update procedure. This illustration is based on the CDE-178BT model. The button locations will be different on some models. Please refer to the owner's manual for your specific model.



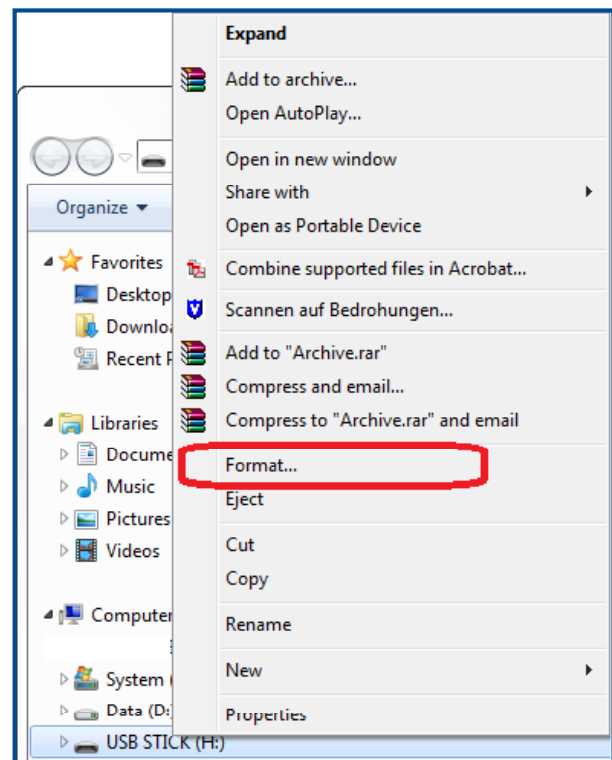
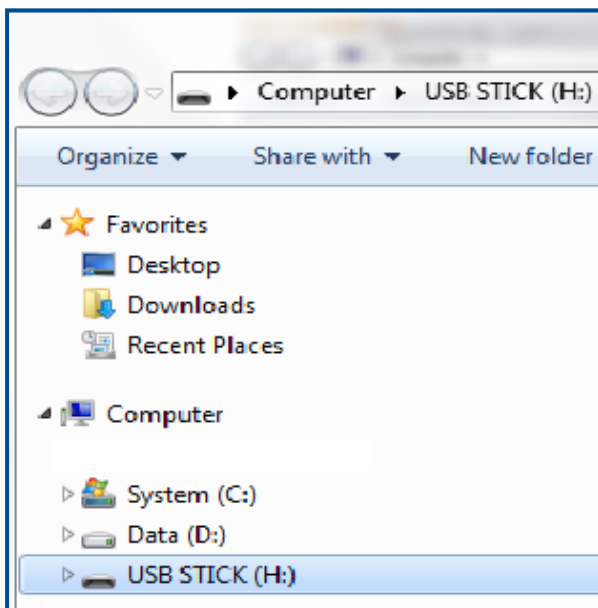
### 1. Format the USB stick



**WARNING – Do not update the Bluetooth firmware while driving**

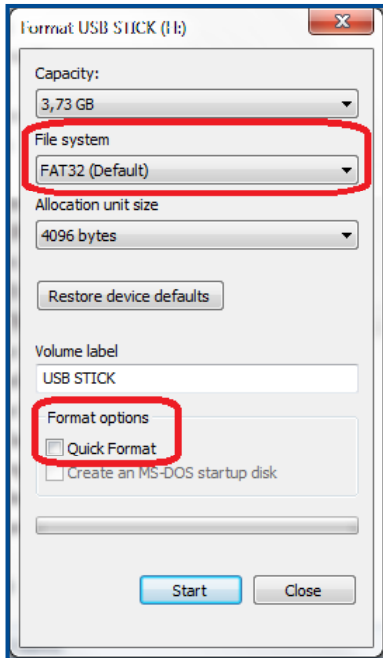
1. Plug in the USB stick.

2. Right click the USB drive and select **“Format...”**

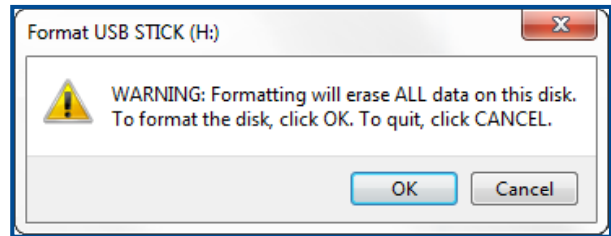


3. Set the options as shown below:

- File system: 'FAT32' (Default)
- Make sure to uncheck "Quick Format"

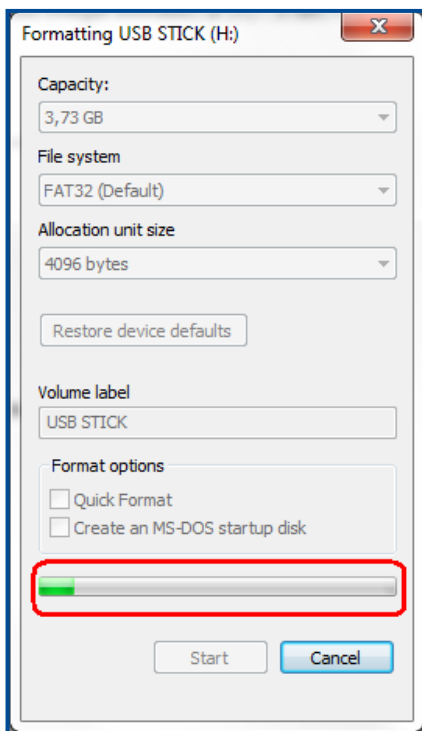


4. Before clicking OK, make sure that you have selected the correct drive

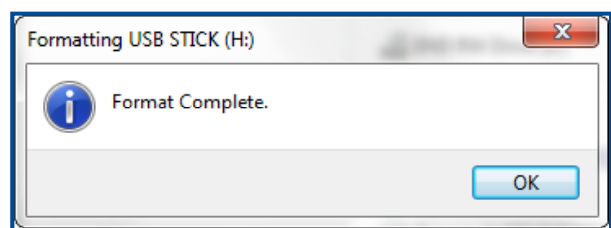


**WARNING - The selected drive will be erased completely**

5. The system formats the USB stick. This can take up to 10 minutes.



6. After formatting has finished Push OK

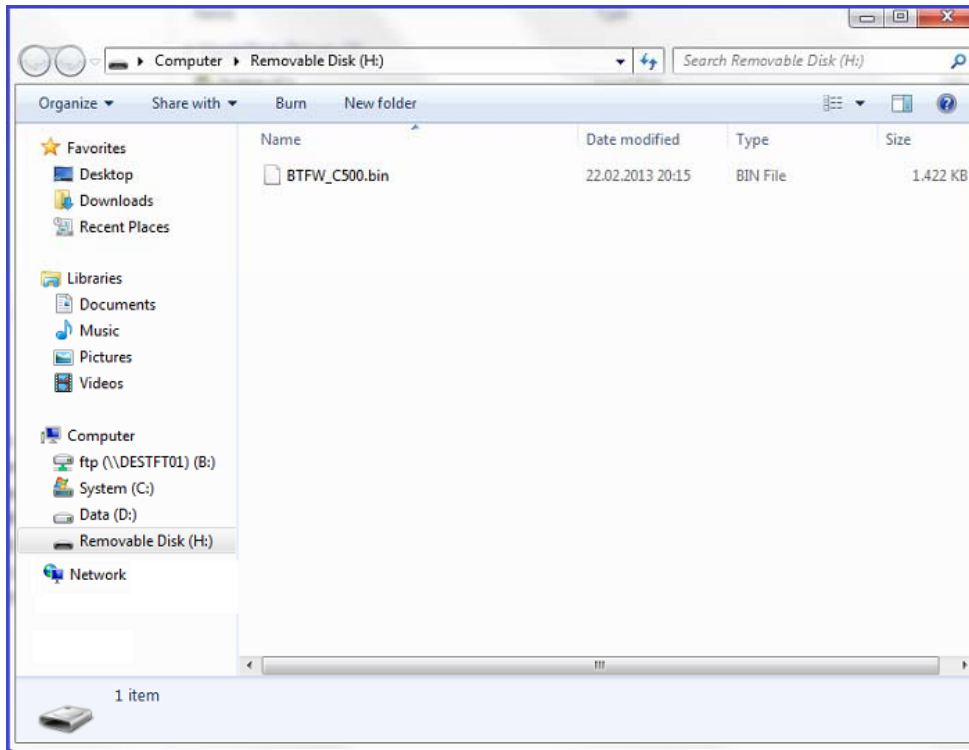


## 2. Copy the file to the USB stick

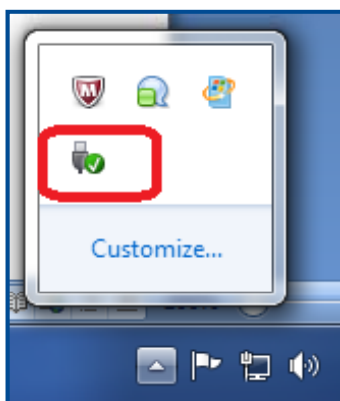
1. Copy the update file downloaded from the Alpine support website "BTFW\_C500.bin" into the root directory of the USB memory stick.



**Please, be sure that the update file is the only file on the USB memory stick.**



2. Make sure to "remove the USB stick safely" before unplugging it



3. A message is displayed once it is safe to remove the USB stick



### 3. Updating the head unit



**Do NOT update the Bluetooth firmware while driving.**

1. Turn on ACC



2. Insert the USB memory stick

3. Push the **AUDIO/SETUP** button for at least 2 seconds to access the setup mode



4. Turn the rotary encoder, select **"Bluetooth"** and press **ENTER** (push the rotary)



5. Turn the rotary encoder, to select **"FW Update"** and press **ENTER**



6. Turn the rotary encoder to select **"FW Update YES"**, and press **ENTER**



7. "Firmware Updating Don't Touch Any Button" will appear on the screen for approximately 10 minutes



*Note: The display of CDE-177BT will show "Updating" blinking.*



Please do not power off the unit and do not push any button, while the unit displays "Firmware Updating Don't Touch Any Button".

8. "Update End Please Push Any Button" will appear on the display



*Note: The CDE-177BT will display "Updated"*

9. Turn off ACC, remove the USB memory stick and turn ACC on

## 4. Confirming the update

1. Push the **AUDIO/SETUP** button for at least 2 seconds to access the setup mode



2. Turn the rotary encoder to select "Bluetooth" and press **ENTER**



3. Turn the rotary encoder to select "FW Version" and press **ENTER**



4. The version will be displayed. Please check that the value "C500" is shown on the display.

